

**Newsletter  
August 2015**



Chesapeake Professional Women's Network, Inc.  
Building Relationships. Growing Businesses.

**Publisher**  
The Chesapeake  
Professional Women's  
Network

**Editor**  
The CPWN Newsletter  
Committee

**CPWN**  
P.O. Box 654  
Bel Air, MD 21014  
[www.cpwnet.org](http://www.cpwnet.org)

**August's Meeting  
"Down Home" BBQ at Rockfield Manor**

Networking—5:30-8:30  
Sponsored by Annie Brock, Annie Brock & Co.  
Catered by: Jarrettsville Pit



**Beer, Wine, Soda**

**Chicken, Ribs, Beans, Cole-  
slaw, Salad, Cornbread,  
Cake!**

**Location: Rockfield Manor,  
501 Churchville Road,  
Bel Air, MD**

**Members: \$35 / Nonmembers: \$50  
Walk-In Fee: \$10**

**Dress: Casual**

**Inside this issue:**

July Sponsor Models Wanted!	2
Calendar of Events	3
Member News	4
Fashion Show Info	5
December NYC Bus Trip	6
Hope in Handbags	7
Committee and Board Directory	8
Sponsorship and Membership Details	9-10

## August's Sponsor: Annie Brock Annie Brock & Co



Strategy consultant and inspirational teacher Annie Brock is passionate about leading her clients to increased success – opening their eyes to self-created barriers, helping them to dramatically increase their effectiveness as a leader and inspiring them to bold action and breakthrough results. This former US Army paratrooper, medical evacuation helicopter pilot, Mary Kay Sales Director and homeschool mom's unique perspective enables her to help clients at all stages in their careers to accelerate their performance. An experienced trainer for small and large organizations, in the US and overseas, Annie is a Founding Partner of the John Maxwell Team, experienced small business owner, and Six Sigma Black Belt.

A Harford County resident since 2007, Annie is a member of the Harford County Chamber of Commerce Military Affairs Committee, a past Chair of the Harford County Commission on Veterans' Affairs, and President of the Susquehanna Chapter, Military Officer Association of America.

Known for generating and implementing innovative breakthrough ideas, Annie will provide just what you, or your organization, need to move on to the next chapter or up to the next level.



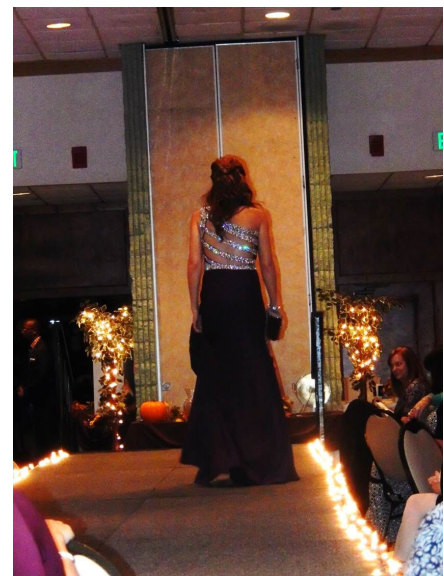
The CPWN Fashion Show Committee is looking for members to model in this year's show!

Modeling is a ton of fun!!!

Don't miss out on your chance to take to the Runway!!

The Fashion Show will be held on Tuesday, October 13.

To volunteer or to learn more, please contact Stephanie Cassedy at [Financialwellnesslfs@gmail.com](mailto:Financialwellnesslfs@gmail.com)



# CPWN's

## Calendar of Networking Events



### **August 11, 2015**

“Down Home” BBQ at Rockfield Manor/Networking—5:30-8:30

Catered by: Jarrettsville Pit

Sponsor: Annie Brock, Annie Brock & Co.

Location: Rockfield Manor, 501 Churchville Road, Bel Air, MD

Members: \$35 / Nonmembers: \$50 / Walk-In Fee: \$10

### **September 8, 2015**

Networking Luncheon—11:30-1:30

Lunch with County Executive Barry Glassman

Location: Waters Edge Corporate Center, 4700 Water Park Drive, Belcamp, MD

Members: \$25 / Nonmembers: \$40 / Walk-In Fee: \$10 (subject to availability)

### **December 5, 2015**

Bus Trip to New York City!

Early bird price - Register by November 5 - \$45.00

After November 5, \$55.00

One price for Members and Guests

Leave 152 and I95 Park n Ride at 7:00 a.m.

Leave New York for Return Home at 7:00 pm

Price includes tip and snacks

*Event Registrations Close on the Friday before the event at 4:00 PM.*

*Cancellation Policy: Please remember it is CPWN policy that change to an event registration must be made NO LATER THAN the Friday before an event. If you do not notify CPWN by this date, you will be responsible for the full registration fee.*



Items for Member News can be submitted by the  
15th of each month to Melissa Harbold at:  
[melissa\\_harbold@ml.com](mailto:melissa_harbold@ml.com)



July Networking Meeting  
at the Tower in Bel Air

*Congratulations to MaryAnn Bogarty on her nomination as a finalist for Money Manager Awards to be presented by Smart CEO Magazine, Baltimore. Award ceremony will be held:*

**DATE:** Thursday, October 15, 2015

**TIME:** 11:30 a.m. – 1:30 p.m.

*The Money Manager Awards program honors bankers, wealth managers and investors who have been instrumental in the growth and success of their clients' organization and/or portfolios. These individuals serve as essential business partners and represent the best and brightest in the region.*

*Let's extend congratulations to MaryAnn, longtime CPWN member and for her continued service on the Board for the nomination – Good Luck!!!! - Patty Desiderio*

### For Your Information...

CPWN is so pleased to have welcomed many new members and guests to our events and meetings over the last few months! Please note that credit cards or checks cannot be accepted at the door. We thank you for your continued support.





Dear CPWN Members,

The Fashion Show Committee volunteers are instrumental in making our event a success year after year. We have several sub-committees, with various responsibilities needed to assist with a smooth delivery of our Fashion Show. If you are interested in helping to sell raffle tickets or help with our silent auction, we would love for you to join us. Any time you can give, would be greatly appreciated. Feel free to contact Mary Ann Bogarty- [mabogarty@harfordbank.com](mailto:mabogarty@harfordbank.com) for more information.

This year's theme for our 17<sup>th</sup> Annual fashion show fundraiser is "A Winter Wonderland". It will be held on Tuesday, October 13, 2015 from 5:30-9:30 at Richlin Ballroom. Back by popular demand, Stephanie Cassidy will be leading our Fashion sub-committee and has promised a fabulous set of fashions again this year. Stephanie and her team are diligently working to secure both male and female models and match each model with the selected vendors. As always, we will be featuring a wide variety of clothing appropriate to all shapes and sizes. The models will also be featuring trendy accessories and eyewear.

Join us to find out what the latest and greatest trends will be! Will it be bold, subtle, plaid or leopard print? Who knows..... we look forward to seeing all of you at the show on October 13!



## CPWN

Chesapeake Professional  
Women's Network  
Invites you to join us  
on a  
**BUS TRIP to New York  
City**

Ride in luxury and fun!  
**WHEN:**  
December 5th, 2015

**IT'S A  
SATURDAY !**

Guests welcome!  
One price for all!

### Details:

- Meet at 152 Park and Ride
- 7:00am
- Bus departs promptly at 7:15am
- Return Home Bus 7:00 pm (departs promptly)
- Arrive back home around 10:30 pm

RESERVE YOUR SPACE NOW

**Early bird \$45.00**

By November 5st

After November 5st \$55.00

Includes tip and snacks  
Gunther Hunt Valley Motor  
Coach  
Register at [CPWNET.ORG](http://CPWNET.ORG)





# Hope in Handbags

It's time to clean out your closets of the gently used purses you no longer want in order to make room for more new to you purses! Saxon's Diamond Centers presents the 7<sup>th</sup> Annual Hope in Handbags Silent Purse Auction and Retail Sale to benefit Harford Family House will be here before you know it! This year's theme, "The Saga of the Traveling Purse" will feature the sights, attractions, goodies and more that make our community the place we all love!

There are many ways you can be a part of the excitement. You can:

- Donate your purses -please bring them to the June CPWN meeting
- Purchase a raffle ticket
- Sponsor the event- sponsorships start at just \$100
- Donate an item to be stuffed in a purse for the silent auction
- Volunteer at the event
- Help to spread the word
- Attend the special preview event on June 30 at XO by Saxon's
- Attend the event on September 11 & 12

Contact Tiffany at [tsimmons@harfordfamilyhouse.org](mailto:tsimmons@harfordfamilyhouse.org) or (410) 273-6700 for additional information on the event and to get involved today!

All proceeds from Hope and Handbags will benefit Harford Family House. Harford Family House has been providing hope and homes to homeless families with children in our community since 1989. It is the largest provider of transitional housing in Harford County and the only organization able to keep an intact family together during the crisis of homelessness. To learn more about Harford Family House please visit [www.harfordfamilyhouse.org](http://www.harfordfamilyhouse.org)



---

## Board and Committee Directory

---

### Board of Directors

#### President

Melissa Harbold, CFP®  
Merrill Lynch  
melissa\_harbold@ml.com

#### Vice President

Bev Smith  
The Lee Tessier Team,  
Keller Williams American Premier Realty  
Beverlybsmith@aol.com

#### Treasurer

Wendy Lee  
Susquehanna Spine & Rehab  
wendy@susquespine.com

#### Assistant Treasurer

Kelly Bedsaul  
Weyrich, Cronin & Sorra, Chartered  
KellyB@wcscpa.com

#### Secretary

Kim Zavrotny  
McComas Funeral Home  
kzavrotny@mccomasfuneralhome.com

#### Immediate Past President

Carolyn W. Evans, Esquire  
Sengstacke & Evans, LLC  
cevens321@aol.com

### Board Members At Large

#### Jeannette Stancill

FitzGerald Financial Group  
jstancill@monarchmtg.com

#### Ronnie T. Davis

Principal, Longstream Coaching and Training LLC  
RonnieDavis@LongstreamCT.com

#### Jody Youll

Coffee News Harford  
jody@coffeenewsharford.com

### Board Chairs

#### Fashion Show

Mary Ann Bogarty  
Harford Bank  
mabogarty@harfordbank.com

#### Social Media

Meggin m'Gonigle-Reeder  
Bank of America  
Meggin.m'gonigle-reeder@bankofamerica.com

#### Sponsorship Chair

Lisa Fuller  
Fuller & Associates Insurance  
Lisa.fuller@insurewithfuller.com

#### Membership Co-Chair

Wendy Wright  
The Wright Fit  
wendy@thewrightfit.net

#### CPWN

P.O. Box 654  
Bel Air, MD 21014  
www.cpwnet.org

#### Newsletter Editor

Jordan Williams  
CPWN Intern  
jordan.williams4@comcast.net



# 2015-2016 CPWN Sponsorship Guidelines

## Regular Monthly Meetings

- Must be a member in good standing (annual dues paid, no outstanding invoices).
- Your sponsorship may be used to promote the business that employs you or that you own (in whole or in part) and that is the business you are registered with in CPWN's records.
- Sponsorships fee is \$150 (unless designated a special event) and includes 1 event registration (**please do not register for the event**, as your 1 event registration is done automatically).
- Sponsorship fee is to be paid in advance of the sponsored event.
- You need to provide a door prize.
- You have exclusive use of table tops to put marketing material, promotional items, etc. Please arrive early to distribute the material.
- You have **5** minutes to speak/present. Please do not go over this time limit.
- Sponsors are featured in CPWN's newsletter. Please provide us with 250-300 words about your company. Someone from the newsletter committee will contact you the month prior to the event.
- All sponsorships are subject to approval of the Board of Directors of CPWN.
- Sponsorship guidelines are subject to change by the Board of Directors of CPWN.
- All meeting locations, speakers, etc., are subject to change by the Board of Directors of CPWN.
- No co-sponsorships are available.

## Happy Hours

- Must be a member in good standing (annual dues paid, no outstanding invoices).
- Your sponsorship may be used to promote the business that employs you or that you own (in whole or in part) and that is the business you are registered with in CPWN's records.
- Sponsorships fee is \$50 and includes 1 event registration (**please do not register for the event**, as your 1 event registration is done automatically).
- Sponsorship fee is to be paid in advance of the sponsored event.
- You have exclusive use of table tops to put marketing material, promotional items, etc. Please arrive early to distribute the material. You may put up a banner advertising your business.
- You have **5** minutes to speak/present. Please do not go over this time limit.
- All sponsorships are subject to approval of the Board of Directors of CPWN.
- Sponsorship guidelines are subject to change by the Board of Directors of CPWN.
- All meeting locations, speakers, etc., are subject to change by the Board of Directors of CPWN.
- No co-sponsorships are available.

*Contact: Lisa Fuller at [Lisa.Fuller@insurewithfuller.com](mailto:Lisa.Fuller@insurewithfuller.com) , to arrange your sponsorship.  
Sponsorships are offered on a first come-first served basis.*



***Building Relationships.  
Growing Businesses.***

**www.cpwnet.org**  
**Membership Dues: \$95**

#### **CPWN Member Benefits**

- ◆ Monthly meetings to network and promote your service or product.
- ◆ Advertising in our online membership directory with website and e-mail links.
- ◆ Varying meeting dates, times, and locations to meet your busy schedule.
- ◆ Topical speakers on issues pertaining to women and business.
- ◆ Opportunities for women to support and mentor each other in both business and personal aspects of our lives.
- ◆ Special events & Meeting Sponsorship
- ◆ A monthly newsletter with calendar of events, networking tips, member updates, and articles of interest

#### **CPWN's Membership Policy**

- ◆ Membership with CPWN is by individual and not by company.
- ◆ It is not transferable.
- ◆ When a member leaves, transfers or changes employment, the member carries her membership to her new place of employment, or it may simply lapse.
- ◆ An unexpired membership is not transferred to the member's replacement at her prior employment.

---

*Opinions expressed by the authors do not necessarily reflect those of the Publisher or the Board of Directors of The Chesapeake Professional Women's Network, Inc. Reproduction or use of material in whole or part is forbidden without prior, written permission of CPWN.*

*Newsletter Copyright 2015,  
Chesapeake Professional Women's Network*